

LM5001 Evaluation Board

National Semiconductor
 Application Note 1588
 Steven Schulte
 February 2007



Introduction

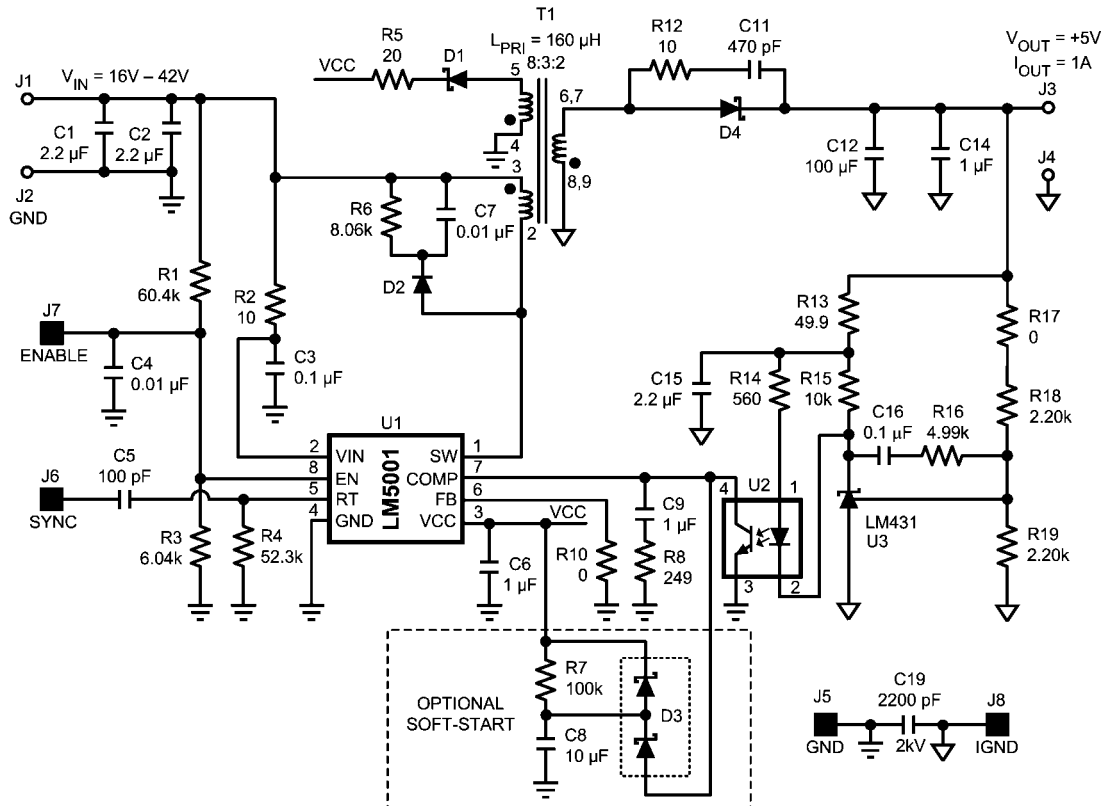
The LM5001 evaluation board is designed to provide the design engineer with a fully functional isolated flyback power converter based on Current Mode Control to evaluate the LM5001 switching regulator IC. The evaluation board provides a 5V output with 1A current capability. The input voltage ranges from 16V to 42V. The design operates at 250kHz, a good compromise between conversion efficiency and solution size. The printed circuit board consists of 2 layers of 2 ounce copper on FR4 material with a thickness of 0.062 inches. This application note contains the evaluation board schematic, Bill-of-Materials (BOM) and a quick setup procedure.

Refer to the LM5001 datasheet for complete circuit design information.

The performance of the evaluation board is as follows:

- Input Range: 16 to 42V
- Output Voltage: 5V, $\pm 2\%$
- Output Current: 0 to 1A
- Frequency of Operation: 250 kHz
- Board Size: 2.75 X 1.75 X 0.6 inches
- Load Regulation: 0.1%
- Line Regulation: 0.1%
- Over Current Limiting

Evaluation Board Schematic



30009601

Powering and Loading Considerations

Read this entire page prior to attempting to power the evaluation board.

QUICK SETUP PROCEDURE

Step 1: Set the input source current limit to 1A. Turn off the input source. Connect the positive output of the input source to J1 and the negative output to J2.

Step 2: Connect the load, with 1A capability, to J3 for the positive connection and J4 for the negative connection.

Step 3: The ENABLE pin, J7, should be left open for normal operation.

Step 4: Set the input source voltage to 28V and the load to 0.1A. The load voltage should be in regulation with a nominal 5V output.

Step 5: Slowly increase the load while monitoring the load voltage at J3 and J4. It should remain in regulation with a nominal 5V output as the load is increased up to 1 Amp.

Step 6: Slowly sweep the input source voltage from 16V to 42V. The load voltage should remain in regulation with a nominal 5V output.

Step 7: Temporally short the ENABLE pin (J7) to GND (J5) to check the shutdown function.

Step 8: Increase the load beyond the normal range to check current limiting while the input source is set to 28V. The output current should limit at approximately 1.9A. The input source current limit should be increased for this step. Fan cooling is critical during this step.

AIR FLOW

Prolonged operation at full power and high ambient temperature will cause the thermal shutdown circuit within the regulator IC to activate. A fan with a minimum of 200 LFM should always be provided.

POWERING UP

Using the ENABLE pin (J7) provided will allow powering up the input source with the current level set low. It is suggested that the load power be kept low during the first power up. Set the current limit of the input source to provide about 1.5 times the anticipated wattage of the load. As you remove the connection from the ENABLE pin to GND (J5), immediately check for 5 volts at the output.

A quick efficiency check is the best way to confirm that everything is operating properly. If something is amiss you can be reasonably sure that it will affect the efficiency adversely. Few parameters can be incorrect in a switching power supply without creating losses and potentially damaging heat.

OVER CURRENT PROTECTION

The evaluation board is configured with cycle-by-cycle over-current protection. This function is completely contained in the LM5001. The Primary current is limited to approximately 1A. This equates to about 1.4A load current when the input voltage is 16V, and about 2.1A load current when the input is 42V. The thermal stress on various circuit components is quite severe while in an overloaded condition, therefore limit the duration of the overload and provide sufficient cooling (air-flow).

SYNCHRONIZATION

A SYNC pin (J6) has been provided on the evaluation board. This pin can be used to synchronize the regulator to an external clock or multiple evaluation boards can be synchronized together by connecting their SYNC pins together. Refer to the LM5001 datasheet for complete information.

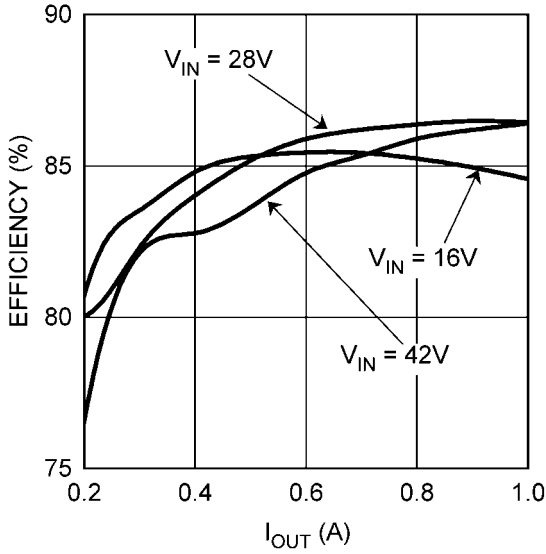
FLYBACK TOPOLOGY

An excellent introduction to the isolated flyback converter is available on the National Semiconductor website. The Application Note AN-1095 discusses both loop compensation with a secondary side error amplifier and the phase-shift caused by opto-couplers.

Performance Characteristics

EFFICIENCY PLOTS

Figure 1 shows the conversion efficiency versus output current for several input voltage conditions.

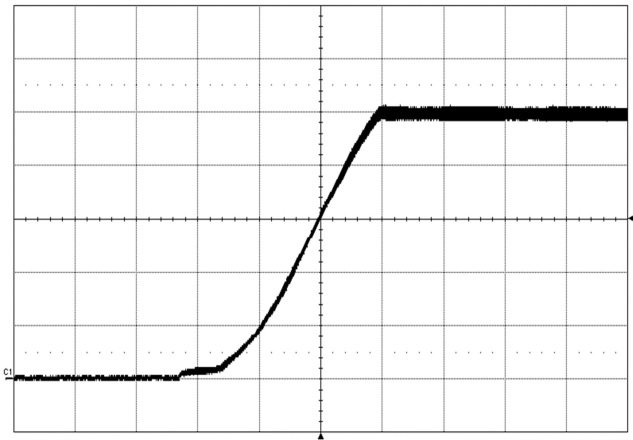


30009602

FIGURE 1.

TURN-ON WAVEFORM

When applying power to the LM5001 evaluation board a soft-start sequence occurs. Figure 2 shows the output voltage during a typical start-up sequence.



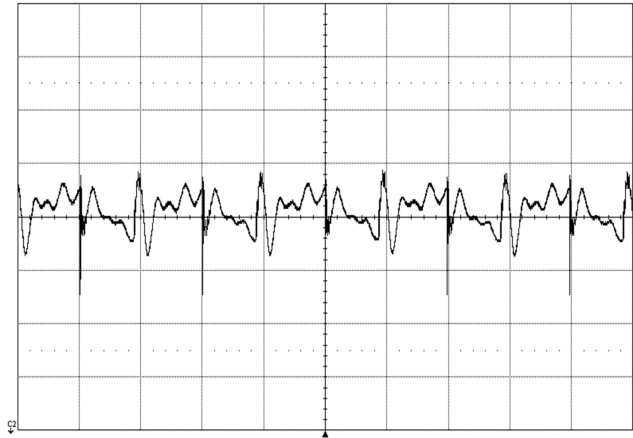
30009603

Conditions: Input Voltage = 28VDC, Output Current = 1A
Trace 1: Output Voltage Volts/div = 1V
Horizontal Resolution = 5ms/div

FIGURE 2.

OUTPUT RIPPLE WAVEFORM

Figure 3 shows the output voltage ripple. This measurement was taken with a very short ground clip and 20MHz bandwidth limiting.



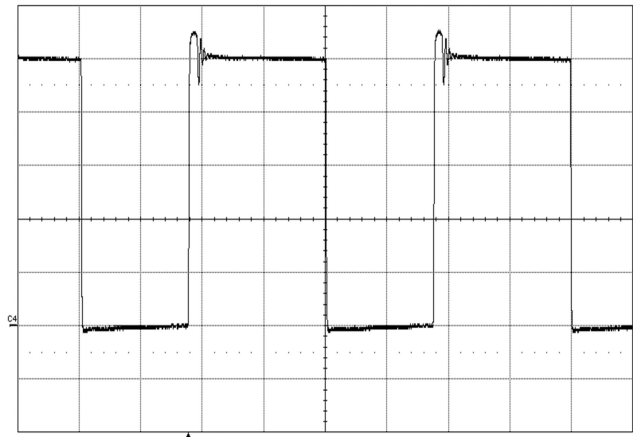
30009604

Conditions: Input Voltage = 28VDC, Output Current = 1A,
Bandwidth Limit = 20MHZ
Trace 1: Output Ripple Voltage Volts/div = 50mV
Horizontal Resolution = 2µs/div

FIGURE 3.

PRIMARY SWITCHNODE WAVEFORM

FIGURE 4 shows the typical primary voltage during continuous conduction mode (CCM).



30009605

Conditions: Input Voltage = 28VDC, Output Current = 1A,
Bandwidth Limit = 20MHZ
Trace 1: LM5001 SW Pin Volts/div = 10V
Horizontal Resolution = 2µs/div

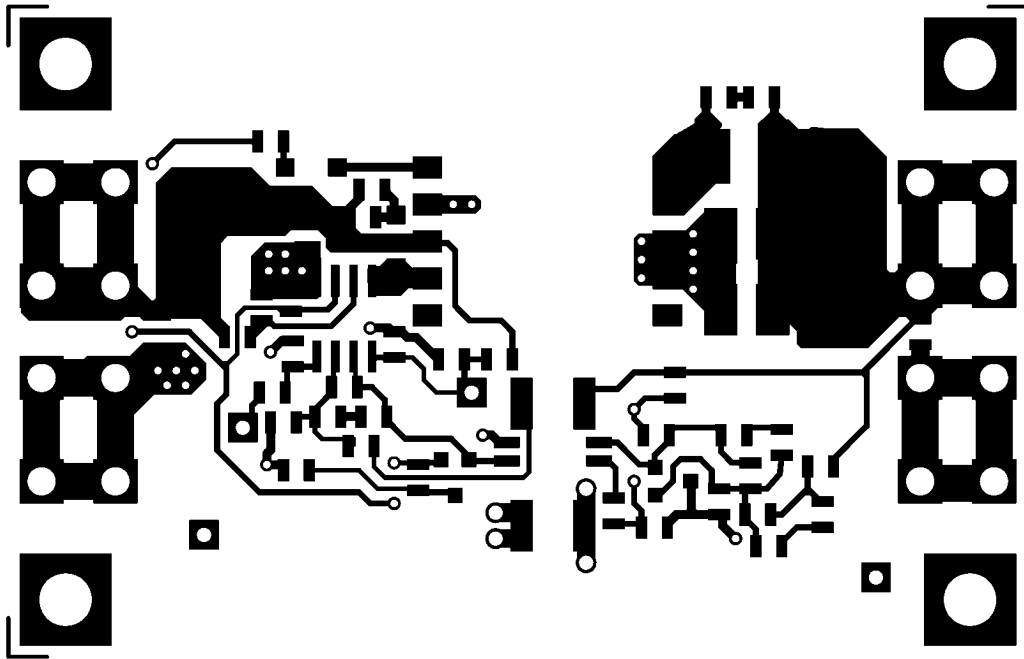
FIGURE 4.

Layout and Bill of Materials

The Bill of Materials is shown below, including the manufacturer and part number.

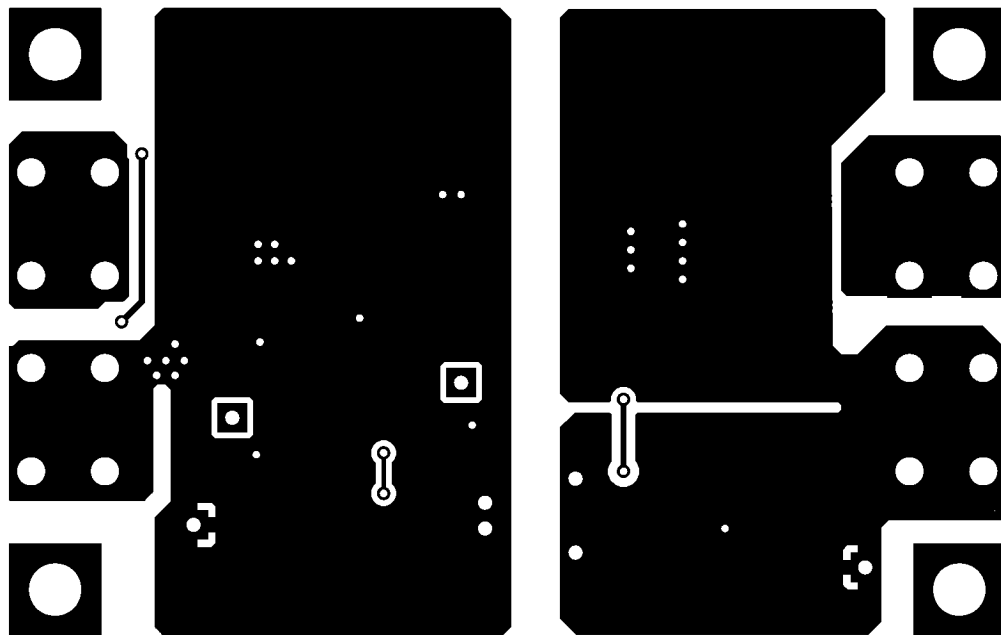
DESIGNATOR	QTY	PART NUMBER	DESCRIPTION	VALUE
C1,2	2	C3225X7R1H225K	CAPACITOR, 1210 X7R CER, TDK	2.2 μ , 50V
C3,16	2	C2012X7R2A104K	CAPACITOR, 0805 X7R CER, TDK	0.1 μ , 100V
C4, 7	2	C2012X7R2A103K	CAPACITOR, 0805 X7R CER, TDK	0.01 μ , 100V
C5	1	C0805C101M5RAC	CAPACITOR, 0805 COG CER, KEMET	100p, 50V
C6, 9, 14	3	C2012X7R1A105K	CAPACITOR, 0805 X7R CER, TDK	1 μ , 10V
C8	1	C2012Y5V1A106Z	CAPACITOR, 0805 Y5V CER, TDK	10 μ , 10V
C11	1	C0805C471M5RAC	CAPACITOR, 0805 COG CER, KEMET	470p, 50V
C12	1	C1210C107M9PAC3810	CAPACITOR, 1210 X5R CER, KEMET	100 μ ,6.3V
C15	1	C2012X7R1C225K	CAPACITOR, 0805 X7R CER, TDK	2.2 μ , 16V
C19	1	C4532X7R3D222K	CAPACITOR, 1812, X7R CER, TDK	2200p, 2000V
D1	1	CMHSH-3	DIODE, SOD-123 SCHOTTKY, CENTRAL SEMI	200mA, 30V
D2	1	CMMR1U-2	DIODE, SOD-123F, CENTRAL SEMI	1A, 200V
D3	1	BAT54S	DIODE, SOT-23 SCHOTTKY, VISHAY	200mA, 30V
D4	1	CMSH5-40	DIODE, SMC SCHOTTKY, CENTRAL SEMI	5A, 40V
R1	1	CRCW08056042F	RESISTOR, 0805, VISHAY	60.4k
R2,12	2	CRCW080510R0F	RESISTOR, 0805, VISHAY	10
R3	1	CRCW08056041F	RESISTOR, 0805, VISHAY	6.04k
R4	1	CRCW08055232F	RESISTOR, 0805, VISHAY	52.3k
R5	1	CRCW080520R0F	RESISTOR, 0805, VISHAY	20
R6	1	CRCW08058061F	RESISTOR, 0805, VISHAY	8.06k
R7	1	CRCW08051003F	RESISTOR, 0805, VISHAY	100k
R8	1	CRCW08052490F	RESISTOR, 0805, VISHAY	249
R10,17	2	CRCW08050000Z0EA	RESISTOR, 0805, VISHAY	0
R13	1	CRCW080549R9F	RESISTOR, 0805, VISHAY	49.9
R14	1	CRCW08055600F	RESISTOR, 0805, VISHAY	560
R15	1	CRCW08051002F	RESISTOR, 0805, VISHAY	10.0k
R16	1	CRCW08054991F	RESISTOR, 0805, VISHAY	4.99k
R18,19	2	CRCW08052201F	RESISTOR, 0805, VISHAY	2.2k
T1	1	FA2636-AL	POWER XFR, COILCRAFT	160 μ H PRIMARY,8:3:2
U1	1	LM5001MA	REGULATOR, NATIONAL SEMI	
U2	1	PS2811-1M	OPTO-COUPLER, NEC	100% - 200% CTR
U3	1	LM431CIM3	REFERENCE, SOT23, NATONAL SEMI	2.500V
J1,2,3,4	4	7693	TERMINAL, 6-32 SCREW, 4 PIN, KEYSTONE	SNAP IN, PC MOUNT
J5,6,7,8	4	5002	TERMINAL, SINGLE PIN, KEYSTONE	TESTPOINT, LOOP

PCB Layout



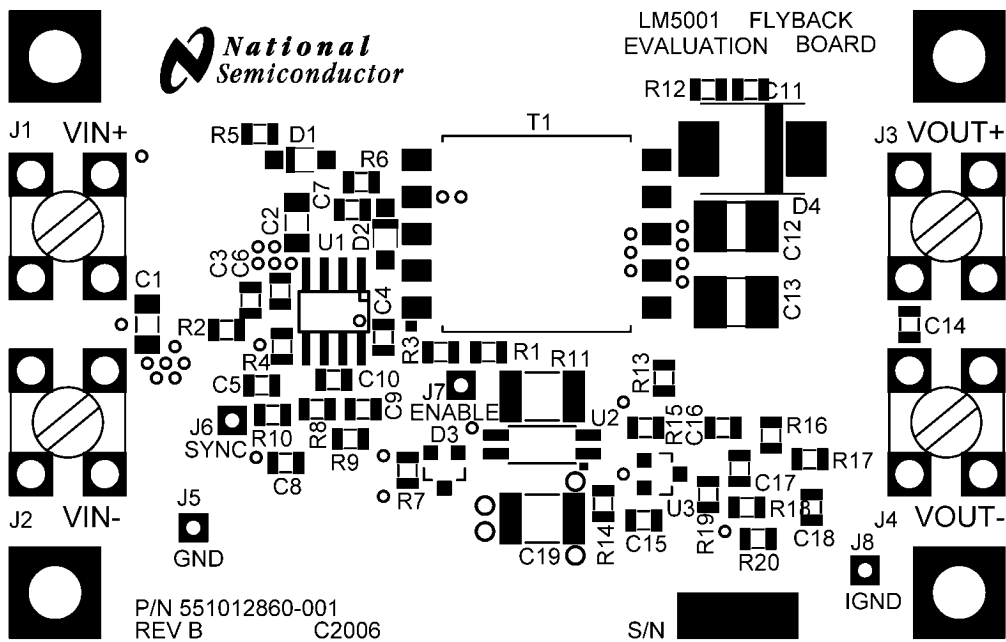
Component Side

30009607



Solder Side

30009608



Silkscreen

30009606

THE CONTENTS OF THIS DOCUMENT ARE PROVIDED IN CONNECTION WITH NATIONAL SEMICONDUCTOR CORPORATION ("NATIONAL") PRODUCTS. NATIONAL MAKES NO REPRESENTATIONS OR WARRANTIES WITH RESPECT TO THE ACCURACY OR COMPLETENESS OF THE CONTENTS OF THIS PUBLICATION AND RESERVES THE RIGHT TO MAKE CHANGES TO SPECIFICATIONS AND PRODUCT DESCRIPTIONS AT ANY TIME WITHOUT NOTICE. NO LICENSE, WHETHER EXPRESS, IMPLIED, ARISING BY ESTOPPEL OR OTHERWISE, TO ANY INTELLECTUAL PROPERTY RIGHTS IS GRANTED BY THIS DOCUMENT.

TESTING AND OTHER QUALITY CONTROLS ARE USED TO THE EXTENT NATIONAL DEEMS NECESSARY TO SUPPORT NATIONAL'S PRODUCT WARRANTY. EXCEPT WHERE MANDATED BY GOVERNMENT REQUIREMENTS, TESTING OF ALL PARAMETERS OF EACH PRODUCT IS NOT NECESSARILY PERFORMED. NATIONAL ASSUMES NO LIABILITY FOR APPLICATIONS ASSISTANCE OR BUYER PRODUCT DESIGN. BUYERS ARE RESPONSIBLE FOR THEIR PRODUCTS AND APPLICATIONS USING NATIONAL COMPONENTS. PRIOR TO USING OR DISTRIBUTING ANY PRODUCTS THAT INCLUDE NATIONAL COMPONENTS, BUYERS SHOULD PROVIDE ADEQUATE DESIGN, TESTING AND OPERATING SAFEGUARDS.

EXCEPT AS PROVIDED IN NATIONAL'S TERMS AND CONDITIONS OF SALE FOR SUCH PRODUCTS, NATIONAL ASSUMES NO LIABILITY WHATSOEVER, AND NATIONAL DISCLAIMS ANY EXPRESS OR IMPLIED WARRANTY RELATING TO THE SALE AND/OR USE OF NATIONAL PRODUCTS INCLUDING LIABILITY OR WARRANTIES RELATING TO FITNESS FOR A PARTICULAR PURPOSE, MERCHANTABILITY, OR INFRINGEMENT OF ANY PATENT, COPYRIGHT OR OTHER INTELLECTUAL PROPERTY RIGHT.

LIFE SUPPORT POLICY

NATIONAL'S PRODUCTS ARE NOT AUTHORIZED FOR USE AS CRITICAL COMPONENTS IN LIFE SUPPORT DEVICES OR SYSTEMS WITHOUT THE EXPRESS PRIOR WRITTEN APPROVAL OF THE CHIEF EXECUTIVE OFFICER AND GENERAL COUNSEL OF NATIONAL SEMICONDUCTOR CORPORATION. As used herein:

Life support devices or systems are devices which (a) are intended for surgical implant into the body, or (b) support or sustain life and whose failure to perform when properly used in accordance with instructions for use provided in the labeling can be reasonably expected to result in a significant injury to the user. A critical component is any component in a life support device or system whose failure to perform can be reasonably expected to cause the failure of the life support device or system or to affect its safety or effectiveness.

National Semiconductor and the National Semiconductor logo are registered trademarks of National Semiconductor Corporation. All other brand or product names may be trademarks or registered trademarks of their respective holders.

Copyright© 2007 National Semiconductor Corporation

For the most current product information visit us at www.national.com



National Semiconductor Americas Customer Support Center
 Email: new.feedback@nsc.com
 Tel: 1-800-272-9959

National Semiconductor Europe Customer Support Center
 Fax: +49 (0) 180-530-85-86
 Email: europe.support@nsc.com
 Deutsch Tel: +49 (0) 69 9508 6208
 English Tel: +49 (0) 870 24 0 2171
 Français Tel: +33 (0) 1 41 91 8790

National Semiconductor Asia Pacific Customer Support Center
 Email: ap.support@nsc.com

National Semiconductor Japan Customer Support Center
 Fax: 81-3-5639-7507
 Email: jpn.feedback@nsc.com
 Tel: 81-3-5639-7560